

SINCE 1905



HEAD-TO-TOE



2019 EASTERN HEMISPHERE STOCKED STYLES CATALOG



HEAD-TO-TOE SAFETY SOLUTIONS

Let us help build your ideal PPE solution —
everything from footwear and flame-resistant
workwear to gloves, safety glasses and more.

SINCE 1905

RED WING, MN USA



2019 EASTERN HEMISPHERE FIND YOUR DISTRIBUTOR

PGS. 30-31



TABLE OF CONTENTS

PROTECTIVE FOOTWEAR

Footwear	4-10
Size Comparison Chart.....	10
Technology.....	11-12

PROTECTIVE WORKWEAR

Customization	13
Fabrics	14-16
Workwear	17-24
Fit and Size Charts.....	25
Technology.....	25

ACCESSORIES

DISTRIBUTORS

PRODUCT INDEX.....



PURPOSE-BUILT PROTECTIVE FOOTWEAR

NEW
KEEPING WORKERS
FAST AND COOL
ON THEIR FEET.



COOLTECH ATHLETICS PG. 6



STITCHMAX

PG. 5



READIFLEX

PG. 7



PETROKING PG. 8



SUPERSOLE®

PG. 9

STITCHMAX

8216 MEN'S SLIP-ON



- 01 – RED WING LEATHER
USA made, premium leather
- 02 – ALUMINUM SAFETY TOE
31% lighter than steel
- 03 – LEATHER LINING
Heel area lined with leather for extra support
- 04 – LENZI® PUNCTURE RESISTANT INSOLE
Protection from underfoot hazards
- 05 – STATIC DISSIPATIVE
- 06 – OPANKA CONSTRUCTION

STITCHMAX Men's Slip-On

8216

UPPER: Full Grain, Water-Resistant Black Star Leather

FOOTBED: Nylon Covered Polyurethane SD

LAST: 224

CONSTRUCTION: Opanka

RATING: ASTM F2413-11, M/I/75/C/75, SD PR

CARE: Leather Protector, Shoe Cream

SIZES: EE 6-12,13,14



SOLE RESISTANCE CHART

Forager

Slip	Best
Oil/Gas	Best
Chemicals	Best
Abrasions	Best
Heat	Better
Non-Marking	No



MADE IN VIETNAM

STITCHMAX Men's Oxford

8217 **8218**

UPPER: (8217) Full Grain, Water-Resistant Black Star Leather

(8218) Full Grain Dark Brown Worn Saddle Leather

FOOTBED: Nylon Covered Polyurethane SD

LAST: 224

CONSTRUCTION: Opanka

RATING: ASTM F2413-11, M/I/75/C/75, SD PR

CARE: Leather Protector, Shoe Cream

SIZES: EE 6-12,13,14



SOLE RESISTANCE CHART

Forager

Slip	Best
Oil/Gas	Best
Chemicals	Best
Abrasions	Best
Heat	Better
Non-Marking	No



MADE IN VIETNAM

STITCHMAX Men's Chukka

8219

UPPER: Full Grain Dark Brown Worn Saddle Leather

FOOTBED: Nylon Covered Polyurethane SD

LAST: 224

CONSTRUCTION: Opanka

RATING: ASTM F2413-11, M/I/75/C/75, SD PR

CARE: Leather Protector, Shoe Cream

SIZES: EE 6-12,13,14



SOLE RESISTANCE CHART

Forager

Slip	Best
Oil/Gas	Best
Chemicals	Best
Abrasions	Best
Heat	Better
Non-Marking	No



MADE IN VIETNAM

COOLTECH ATHLETICS

6343 MEN'S ATHLETIC



- 01 – 360 DEGREE COOLING SYSTEM
Full surround cooling technology inside the bootie and footbed work together to cool the foot.
- 02 – REMOVABLE EVA FOOTBED
Built-in Agion® antimicrobial technology combats odor-causing bacteria. High-rebound cushioning at key strike points.
- 03 – INCREDIBLY LIGHTWEIGHT
Feels like a sneaker but performs like a work boot, keeping workers light and protected on their feet.
- 04 – VIBRAM® SPEEDSOLE
Exclusive outsole design offers the ultimate in slip-resistance for fast, confident movement.
- 05 – NANO COMPOSITE TOE CAP
Protects toes with less weight and bulk.
- 06 – BOA® LACING SYSTEM
Quickly locks in for a secure fit, delivering all-day comfort that stays consistent and true.

NEW COOLTECH™ ATHLETICS Men's Athletic
6343 **NT** **EH**

UPPER: Abrasion Resistant Mesh
FOOTBED: Fabric Covered EVA
LAST: 305
CONSTRUCTION: Cement
RATING: ASTM F2413-11, M/I/75/C/75, EH
SIZES: EE7-12,13



SOLE RESISTANCE CHART

Vibram® Speedsole

Slip	Best
Oil/Gas	Best
Chemicals	Best
Abrasions	Best
Heat	Best
Non-Marking	Yes

MADE IN VIETNAM

NEW COOLTECH™ ATHLETICS Men's Athletic
6344 **NT** **EH**

UPPER: Abrasion Resistant Mesh
FOOTBED: Fabric Covered EVA
LAST: 305
CONSTRUCTION: Cement
RATING: ASTM F2413-11, M/I/75/C/75, EH
SIZES: EE7-12,13



SOLE RESISTANCE CHART

Vibram® Speedsole

Slip	Best
Oil/Gas	Best
Chemicals	Best
Abrasions	Best
Heat	Best
Non-Marking	Yes

MADE IN VIETNAM

ATHLETICS Men's Athletic
6338 **AT** **EH**

UPPER: Abrasion Resistant Mono-Mesh
FOOTBED: Nylon Covered Open Cell Foam
SHANK: Nylon
LAST: 305
CONSTRUCTION: Cement
RATING: ASTM F2413-11, M/I/75/C/75, EH
SIZES: EE 7-12,13



SOLE RESISTANCE CHART

Rubber-EVA Stealth

Slip	Best
Oil/Gas	Best
Chemicals	Best
Abrasions	Best
Heat	Best
Non-Marking	Yes

MADE IN VIETNAM



FLEXBOND Men's Oxford

3210

UPPER: Full Grain Black Leather
FOOTBED: Removable Polyurethane-SD
SHANK: Non-metallic
LAST: NU-2689
CONSTRUCTION: Direct Attach
RATING: EN ISO 20345:2011 S1 SRA
CARE: Nubuck/Suede Cleaner Kit
EU SIZES: 38,39,40,41,42,43,44,45,46,47

SOLE RESISTANCE CHART	
TPU-PU Transport	
Slip	Best
Oil/Gas	Best
Chemicals	Best
Abrasions	Best
Heat	Good
Non-Marking	Yes



MADE IN CHINA

READIFLEX

6647 MEN'S SLIP-ON



- 01 – UPPER DESIGN
Provides a comfortable fit and casual look
- 02 – NANO COMPOSITE TOE
Protects toes with less weight and bulk
- 03 – REMOVABLE PU FOOTBED
Absorbs shock and improves comfort
- 04 – POLYURETHANE MIDSOLE
Enhances underfoot comfort, flexibility and durability
- 05 – STARGRIP® X2 RUBBER OUTSOLE
Optimized for slip- and wear-resistance

READIFLEX Men's Oxford

6647 **6646**

UPPER: (6646) Full Grain Black Star Leather
 (6647) Full Grain Dark Brown Worn Saddle Leather
FOOTBED: Leather Covered Polyurethane
SHANK: Nylon
LAST: 882
CONSTRUCTION: Cement
RATING: ASTM F2413-11, M/1/75/C/75, EH
CARE: Leather Protector, Shoe Cream
SIZES: EE 6-12,13



SOLE RESISTANCE CHART	
StarGrip®	
Slip	Best
Oil/Gas	Best
Chemicals	Best
Abrasions	Best
Heat	Best
Non-Marking	Yes



MADE IN CAMBODIA

WOMEN'S

TRUHIKER Women's 6-inch Hiker Boot

2375

UPPER: Full Grain, Waterproof Hazelnut Trampler Leather
FOOTBED: Nylon Covered Polyurethane
SHANK: Steel
LAST: 221
CONSTRUCTION: Cement
RATING: ASTM F2413-11, F/1/75/C/75, EH
CARE: Leather Protector, NaturSeal™
SIZES: D 4-10



SOLE RESISTANCE CHART	
Vibram® Summit TC-4 Plus	
Slip	Best
Oil/Gas	Best
Chemicals	Best
Abrasions	Best
Heat	Best
Non-Marking	Yes



MADE IN CHINA

PETROKING XT



- 01 – BOA® LACING SYSTEM
Instantly tighten and loosen for easy in/out
- 02 – CORDURA® UPPER
Durable, abrasion-resistant performance
- 03 – D30®
Extreme impact protection for ankles and metatarsal area
- 04 – HEEL KICK
Allows for easy boot removal and preserves heel integrity
- 05 – TREDMAX RUBBER OUTSOLE
Delivers exceptional slip resistance
- 06 – PREMIUM SAFETY TOE CAP
Lightweight, rugged protection that meets EN ISO and ASTM standards
- 07 – FORCEGUARD™
Protects toe area from abrasion, oils and chemicals
- 08 – MADE IN ITALY

PETROKING XT Men's Oxford

3202

UPPER: Full Grain Black Leather
FOOTBED: Nylon Covered Polyurethane
SHANK: Nylon
LAST: RW51423
CONSTRUCTION: Direct Attach

RATING: ASTM F2413-11, M/1/75/C/75, SD PR
EN ISO 20345:2011 S3 SRC HRO ESD

CARE: Black Shoe Cream
EU SIZES: 36,37,38,39,40,41,42,43,44,45,46,47,48



ComfortGard

SOLE RESISTANCE CHART

TredMax SD

Slip	Best
Oil/Gas	Best
Chemicals	Best
Abrasions	Best
Heat	Best
Non-Marking	Yes



MADE IN ITALY

PETROKING LT Men's 6-inch Boot

3205 **3228**

UPPER: (3205) Full Grain Black Leather (3228) Full Grain Brown Leather
FOOTBED: Nylon Covered Polyurethane

SHANK: Nylon
LAST: RW51423
CONSTRUCTION: Direct Attach

RATING: (3205) ASTM F2413-11, M/1/75/C/75, SD PR
EN ISO 20345:2011 S3 SRC HRO ESD
(3228) ASTM F2413-11, M/1/75/C/75, EH PR
EN ISO 20345:2011 SB SRC P E WRU HRO FO

CARE: Leather Protector, Shoe Cream
EU SIZES: 36,37,38,39,40,41,42,43,44,45,46,47,48



ComfortGard

SOLE RESISTANCE CHART

(3205) TredMax SD /
(3228) TredMax EH

Slip	Best
Oil/Gas	Best
Chemicals	Best
Abrasions	Best
Heat	Best
Non-Marking	Yes



MADE IN ITALY

PETROKING XT Men's 8-inch Boot

3208

UPPER: Black Cordura®
FOOTBED: Nylon Covered Polyurethane
SHANK: Nylon
LAST: RW51423
CONSTRUCTION: Direct Attach

RATING: ASTM F2413-11, M/1/75/C/75, Mt/75, SD, PR
EN ISO 20345:2011 S3 SRC M AN WR HRO FO

CARE: Leather Protector, Shoe Cream
EU SIZES: 36,37,38,39,40,41,42,43,44,45,46,47,48



ComfortGard

SOLE RESISTANCE CHART

TredMax SD

Slip	Best
Oil/Gas	Best
Chemicals	Best
Abrasions	Best
Heat	Best
Non-Marking	Yes



MADE IN ITALY



PETROKING LT Men's 8-inch Boot

3207 **3229**

UPPER: (3207) Full Grain Black Leather (3229) Full Grain Brown Leather

FOOTBED: Nylon Covered Polyurethane

SHANK: Nylon

LAST: RW51423

CONSTRUCTION: Direct Attach

RATING: (3207) ASTM F2413-11, M/I/75/C/75, SD PR
 EN ISO 20345:2011 S3 SRC HRO ESD
 (3229) ASTM F2413-11, M/I/75/C/75, EH PR
 EN ISO 20345:2011 SB SRC P E WRU HRO FO

CARE: Leather Protector, Shoe Cream

EU SIZES: 36,37,38,39,40,41,42,43,44,45,46,47,48



SOLE RESISTANCE CHART	
(3207) TredMax SD / (3229) TredMax EH	
Slip	Best
Oil/Gas	Best
Chemicals	Best
Abrasions	Best
Heat	Best
Non-Marking	Yes



MADE IN ITALY

SUPERSOLE®

02 ◦



◦ 01

2233 MEN'S 8-INCH BOOT

03 ◦

◦ 04

- 01 – RED WING LEATHER
Premium, handcrafted leather
- 02 – DIRECT ATTACH TO WELT CONSTRUCTION
All-around stability and durability
- 03 – MINI LUG SUPERSOLE®
Proven durability and comfort
- 04 – MADE IN RED WING, MN USA
Trusted craftsmanship, reliable protection

SUPERSOLE® Men's Chukka

8212

UPPER: Finished Split Brown Leather

SHANK: Fiberglass

LAST: 522

CONSTRUCTION: SuperSole® Welt

RATING: ASTM F2413-11, M/I/75/C/75, EH PR

CARE: Leather Protector

SIZES: EE 6-12,13



SOLE RESISTANCE CHART	
Mini Lug SuperSole®	
Slip	Good
Oil/Gas	Best
Chemicals	Better
Abrasions	Better
Heat	Good
Non-Marking	Yes



MADE IN THE USA

SUPERSOLE® Men's 8-inch Boot

2233

UPPER: Full Grain, Water-Resistant Velva Boomer Leather

SHANK: Steel

LAST: 522

CONSTRUCTION: SuperSole® Welt

RATING: ASTM F2413-11, M/I/75/C/75, EH

CARE: Boot Oil, Leather Protector

SIZES: EE 7-12,13,14



SOLE RESISTANCE CHART	
Mini Lug SuperSole®	
Slip	Good
Oil/Gas	Best
Chemicals	Better
Abrasions	Better
Heat	Good
Non-Marking	Yes



MADE IN THE USA



SUPERSOLE® Men's 9-inch Pull-On Boot

8241 **ST** **EH** **PR**

UPPER: Full Grain, Water-Resistant Brown Boomer Leather
SHANK: Fiberglass
LAST: 522
CONSTRUCTION: SuperSole® Welt
RATING: ASTM F2413-11, M/1/75/C/75, EH PR
CARE: Boot Oil, Leather Protector
SIZES: EEE 6-12,13



SOLE RESISTANCE CHART

Mini Lug SuperSole®

Slip	Good
Oil/Gas	Best
Chemicals	Better
Abrasions	Better
Heat	Good
Non-Marking	Yes



SUPERSOLE® Men's 9-inch Pull-On Boot

8264 **ST** **EH** **PR**

UPPER: Finished Split Brown Leather
SHANK: Fiberglass
LAST: 522
CONSTRUCTION: SuperSole® Welt
RATING: ASTM F2413-11, M/1/75/C/75, EH PR
CARE: Leather Protector
SIZES: EEE 6-12,13,14



SOLE RESISTANCE CHART

Mini Lug SuperSole®

Slip	Good
Oil/Gas	Best
Chemicals	Better
Abrasions	Better
Heat	Good
Non-Marking	Yes



SUPERSOLE® Men's 11-inch Pull-On Boot

8231 **ST** **EH** **PR**

UPPER: Full Grain, Water-Resistant Brown Boomer Leather
SHANK: Fiberglass
LAST: 522
CONSTRUCTION: SuperSole® Welt
RATING: ASTM F2413-11, M/1/75/C/75, EH PR
CARE: Boot Oil, Leather Protector
SIZES: EEE 6-12,13,14



SOLE RESISTANCE CHART

Mini Lug SuperSole®

Slip	Good
Oil/Gas	Best
Chemicals	Better
Abrasions	Better
Heat	Good
Non-Marking	Yes



Footwear Size Comparison Chart

For most common International systems

USA Men's			3.5	4	4.5	5	5.5	6	6.5	7	7.5	8	8.5	9	9.5	10	10.5	11	11.5	12	13	14	15	16
USA Women's	4	4.5	5	5.5	6	6.5	7	7.5	8	8.5	9	9.5	10	10.5	11	12								
European	33.5	34	34.5	35	36	37	37.5	38	38.5	39	40	41	41.5	42	42.5	43	43.5	44	45	46	47	48	49	50
British	1.5	2	2.5	3	3.5	4	4.5	5	5.5	6	6.5	7	7.5	8	8.5	9	9.5	10	10.5	11	12	13	14	15
cm Men's			21.5	22	22.5	23	23.5	24	24.5	25	25.5	26	26.5	27	27.5	28	28.5	29	29.5	30	31	32	33	34
cm Women's	21	21.5	22	22.5	23	23.5	24	24.5	25	25.5	26	26.5	27	27.5	28	28.5								

Please note that there is no real standard for converting shoes. Your best option is to have your foot measured professionally at a local shoe store and get the Men's and Women's sizes directly from the measurement device.



BOOT CONSTRUCTION CATEGORIES: WHERE PURPOSE-BUILT BEGINS



How work footwear is manufactured dictates its relative degree of flexibility, stability and performance, which in turn determines intended purpose. That's why we've organized this catalog from light to heavy duty construction methods.

Within each construction category, boots are further organized into product families that share a common technology or platform.



FOOTWEAR TECHNOLOGY & COMPONENTS

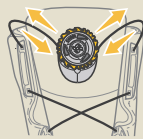
Red Wing relies on insights from real workers and extensive market research to design for specific work environments. With purpose top of mind, our developers and engineers then layer specific technology, form and function into every design detail.



UPPER TECHNOLOGY

BOA® Boa® Lacing System Revolutionary closure system

Boa® technology makes getting in and out of lace-up boots faster and easier than ever. Turn the dial to tighten laces to the perfect tension, with no pressure points. One click of the reel releases the laces instantly.



Quick on and off convenience.

CUSHIN Cushin Comfort tongue technology

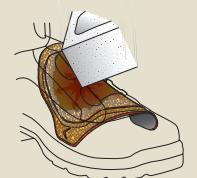
Minimizes pressure some workers feel on their shin or ankle from the top of the boot tongue. A four-way stretch nylon offers relief and flexibility while walking, and an internal padded waffle mesh maintains premium comfort.



Minimizes pressure on shin.

D30® Impact protection

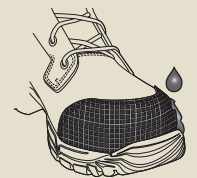
This patented technology consistently outperforms traditional foam-based materials, absorbing energy from drops and impacts. Meets EN ISO and ASTM standards.



Force from impact is dissipated.

FORCE GUARD™ Added protection for durability

This technology is a protective covering that provides long-wearing abrasion, oil and chemical resistance on critical areas of the boot.



Rubber covering for durability

R | W LEATHER Red Wing Leather Handcrafted leather from S.B. Foot Tanning Co.

Starting with hides from U.S. raised cattle with minimal surface imperfections, we control every step of the process, using time-honored techniques to craft leather with natural beauty and unmatched durability.

CORDURA CORDURA BRAND FABRIC Cordura®

Rugged, high-performance material that is abrasion- and chemical-resistant. It's also easy to clean.



INSOLE TECHNOLOGY



L-protection®
Non-metallic, puncture-resistant insoles

These insoles provide maximum protection from foot injuries due to sole puncture. Made of multiple layers of high tenacity fibres, pre-treated with a special ceramic, these non-metallic textile inserts are lightweight, flexible, highly comfortable, thermal insulated and non-detectable by metal devices (in products made with appropriate toe protection).



SWEN-FLEX®
Non-metallic, puncture-resistant insoles

These non-metallic, puncture-resistant insoles are manufactured from high-strength, woven fibres. They meet or exceed all world standards for puncture resistance, including CSA, ASTM and EN.

COMFORTGARD

Midsole/outsole system

Superior cushioning and traction for the toughest work environments. A polyurethane midsole for underfoot comfort and stability. A rubber outsole platform for non loading, best oil, slip and heat resistance.

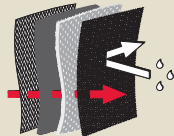


LINING TECHNOLOGY



Red Wing Waterproof
3-layers for waterproof protection

This system uses a 3-layer approach to keep feet dry. 1 - Linings help move moisture away from the foot to keep it dry. 2 - Foam provides cushioning and a comfortable fit. 3 - A waterproof bootie is a barrier to keep water out. Tricot, a protective material, is applied to the outside of the bootie to ensure a complete waterproof system.

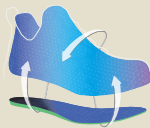


Perspiration moves away from the foot while water stays out.



CROSSBREEZE
Instant cooling system

CrossBreeze technology moves heat away from the skin above, around and below the foot, creating an instant cooling effect.



Perspiration moves away from the foot while water stays out.



SOLE TECHNOLOGY



Heat-resistant Outsoles
Performance on hot surfaces

Soles that have been designed and tested to perform on high heat surfaces. Soles identified as HRO are heat resistant to melting at a minimum of 475° Fahrenheit.



Durable sole resists melting.



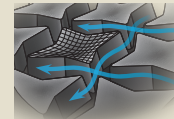
Slip-resistant Outsoles
Performance on slippery surfaces

Soles that have been designed and tested to perform on slippery surfaces. Soles identified as SRC meet the standard listed with each product.



StarGrip® Sole
Superior slip-resistance

StarGrip® Technology features an 8-sided design and a unique concave shape of the star pad sole, allowing it to act like a mini suction cup to provide greater grip of the surface.



Unique Concave Shape



SuperSole®
Comfort inside. Durable outside.

Single density urethane sole designed to provide durability and comfort. It delivers performance factors of abrasion resistance, cut resistance, traction, and oil and chemical resistance.



Mini Lug SuperSole®



Vibram®
Versatile, performance outsoles

Exceptional design intersects with innovative rubber compounds to create versatile, performance outsoles. Vibram® outsoles offer excellent traction and high abrasion resistance in a multitude of environments.



Vibram® Summit Sole



PURPOSE-BUILT PROTECTIVE WORKWEAR



FIT FOR THE TOUGHEST JOBS.

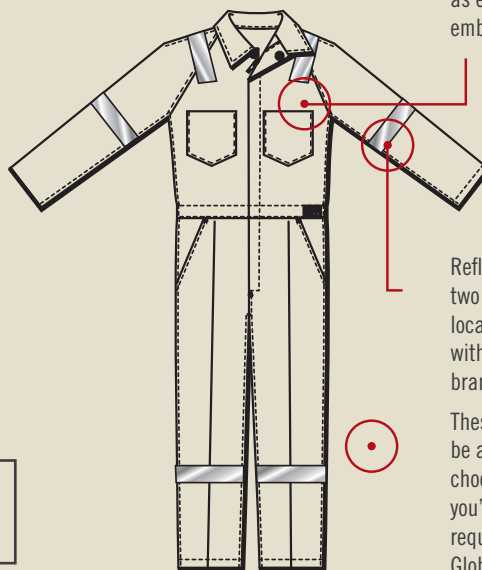
Red Wing workwear provides comfort and confidence on dangerous job sites around the globe. Our PPE garments meet or exceed international standards for safety. Plus, we add the Red Wing difference of superior construction and rigorous internal testing for fit and wear to cover every component of a Red Wing garment, from zippers and snaps to thread and reflective tape. Our garments are ready to work in the toughest environments.

CUSTOMIZED FOR YOUR COMPANY

Contact your Red Wing Global Solutions Expert > Customize garments to your specifications > **Your custom solution delivered**

(Please contact your Red Wing Global Solutions Expert for minimum order requirements.)

Customized graphics can be applied as embroidered patches, direct embroidery or as heat seal.



Reflective striping can be added in two widths (25 mm and 50 mm) and locations as necessary to comply with safety standards or company brand standards.

These customization options can be applied in nearly any way you choose. If you do not find a style you're looking for or features you require, please contact your Red Wing Global Solutions Expert to discuss your options.



FLASHGUARD[®] TM

Lightweight and comfortable, inherently flame-resistant fabric

Inherent FR Fabric

FABRIC CODE 11

Weight	Greige	197 g/m ² (5.8 oz./yd ²)
	Finished	220 g/m ² (6.5 oz./yd ²)
Blend	48% Tencel, 39% Modacrylic, 12% Aramid, 1% Carbon	
Weave	Twill	

COMPLIANCE

Heat and Flame	EN ISO 11612 A1 + A2, B1, C1 (single layer) and A1 + A2, B2, C2, F2 (multi-layer) insulated garments
----------------	--

Flashfire	NFPA 2112 UL Recognized Component
-----------	-----------------------------------

Electric Arc Flash	IEC 61482-1-2, Class 1
	ASTM F1959 ATPV 8.7 cal/cm ² (CAT2)

Anti-static	EN 1149-5
-------------	-----------

Oeko-Tex [®]	Oeko-Tex [®] Standard 100 (sets limits for maximum content of formaldehyde, pesticides, PCBs, heavy metals, azo dye, arylamine flame-retarding agents, phthalates, volatile organic substances, biocides and other substances.)
-----------------------	--

Welding and Allied Processes Protection	EN ISO 11611 (class 1)
---	------------------------

STANDARD COLORS	Please confirm availability with your Red Wing representative. Special order colors available upon request.
-----------------	---

WASH AND CARE

Standard home, commercial and industrial laundering is appropriate. When laundering instructions are followed, shrinking tolerance is typically 1-3%.

Machine wash normal:
Unlined: max 60° C / 140° F
Insulated: max 40° C / 104° F

Do not bleach

Iron medium heat:
max 150° C / 300° F

Dry clean: any solvent except trichloroethylene

Tumble dry normal:
low heat

Do not use cleaning agents containing organic soap, chlorine bleach, hydrogen peroxide or any bleaching agent.

Do not use softeners or starch.

FlashGuard TM is a Red Wing-exclusive flame-resistant fabric. It combines innovative tencel fibers that are comfortable and color-fast, with modacrylic fibers that give the fabric its flame-resistant properties. Altogether the proprietary blend creates a superior fabric that is inherently flame-resistant, lightweight and comfortable.

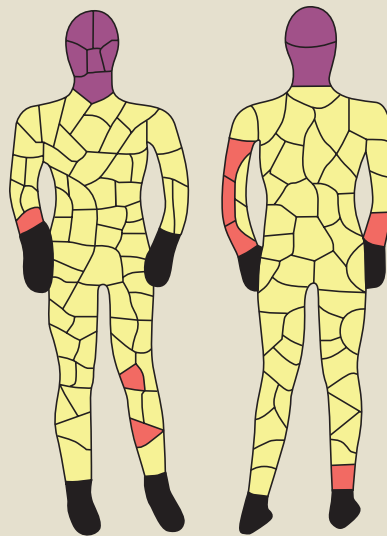
Features

- FlashGuard TM fabric provides comfort, breathability and flexibility, along with the superior strength and durability of synthetic (acrylic) fibers.
- Absorbs moisture and transfers it away from the body, keeping the wearer dry and comfortable
- Extremely lightweight, performs well in a variety of climates, and is particularly well-suited for hot and humid conditions

Flame-Resistant Properties

- When exposed to flash flame, FlashGuard TM fabric fibers carbonize and will not melt or drip, forming a barrier to minimize burns to the wearer's skin
- Inherently flame-resistant, with FR properties that last throughout the fabric's lifetime, regardless of washing frequency

Performance



Total Burn Area (Including head and neck)	13.11%*
Invalid Sensor	
No Burn	
6.56%	Total 2nd Degree Burn
0.00%	3rd Degree Burn (body)
6.56%	3rd Degree Burn (head/neck)
6.56%	Total 3rd Degree Burn**

* Total Burn Area excluding head/neck not covered by fabric: 6.56%

** 3rd Degree Burn Area excluding head/neck not covered by fabric: 0.00%

Test conducted by the Textile Protection and Comfort Center College of Textiles, North Carolina State University Raleigh, North Carolina, USA



DALETEC®

Comfortable, engineered flame-resistant fabric

Daletec flame-resistant fabric is strong, yet comfortable and it offers the easy-wearing properties of cotton.

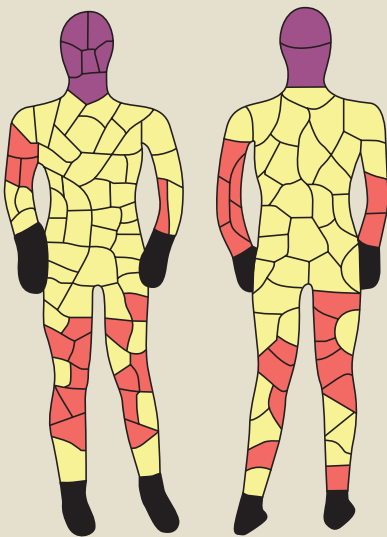
Features

- Made of cotton, Daletec fabric is soft, pliable and can be comfortably worn directly against the skin.
- Due to its molecular structure, cotton is warmer in cold weather and cooler in hot weather than many synthetic fabrics.
- Cotton fibers are spun to maximize fabric strength and durability.
- Like other natural fabrics, Daletec fabric absorbs and transfers moisture away from the body to keep the wearer dry and comfortable.
- Lightweight and breathable, Daletec fabric performs well in a variety of climate applications. It is especially well-suited for hot or humid applications.

Flame-Resistant Properties

- Daletec fabric provides protection against accidental flash fires and heat. It is engineered not to ignite, melt, drip or expose the skin of the wearer.
- Flame-resistant characteristics last throughout the Daletec fabric's lifetime, regardless of washing frequency when care instructions are followed.

Performance



Total Burn Area (Including head and neck)	34.43%*
Invalid Sensor	
No Burn	
27.87%	Total 2nd Degree Burn
0.00%	3rd Degree Burn (body)
6.56%	3rd Degree Burn (head/neck)
6.56%	Total 3rd Degree Burn**

* Total Burn Area excluding head/neck not covered by fabric: 27.87%

** 3rd Degree Burn Area excluding head/neck not covered by fabric: 0.00%

Test conducted by the Textile Protection and Comfort Center College of Textiles, North Carolina State University Raleigh, North Carolina, USA

Treated FR Fabric

FABRIC CODE 15

Weight	Greige	200 g/m ² (5.9 oz./yd ²)
	Finished	220 g/m ² (6.5 oz./yd ²)
Blend	98% Cotton, 2% Carbon, Pyrovatex Treated	
Weave	Twill 2/1	

COMPLIANCE

Heat and Flame EN ISO 11612 A1 + A2, B1, C1 (single layer) and A1 + A2, B2, C2, F2 (multi-layer) insulated garments

Electric Arc Flash IEC 61482-1-2, Class 1

Anti-static EN 1149-5

Oeko-Tex® Oeko-Tex® Standard 100 (sets limits for maximum content of formaldehyde, pesticides, PCBs, heavy metals, azo dye, arylamine flame-retarding agents, phthalates, volatile organic substances, biocides and other substances.)

STANDARD COLORS Please confirm availability with your Red Wing representative. Special order colors available upon request.

WASH AND CARE

Standard home, commercial and industrial laundering is appropriate. When laundering instructions are followed, shrinking tolerance is typically 3-5%.

Machine wash normal:
Unlined: max 60° C / 140° F
Insulated: max 40° C / 104° F

Do not bleach

Iron medium heat:
max 150° C / 300° F

Dry clean: any solvent except trichloroethylene

Tumble dry normal:
low heat

Do not use cleaning agents containing organic soap, chlorine bleach, hydrogen peroxide or any bleaching agent.

Do not use softeners or starch.

Do not use acids or sour rinse.

LIGHTWEIGHT COTTON & POLYESTER/COTTON

Durable and comfortable on the job.

Non-FR Fabric

FABRIC CODE 40

Weight	6 oz./yd ² (200 g/m ²)
Blend	100% Cotton
Weave	Twill

FABRIC CODE 65

Weight	6 oz./yd ² (200 g/m ²)
Blend	65% Polyester, 35% Cotton
Weave	Twill 2/1


COMPLIANCE


Oeko-Tex®	Oeko-Tex® Standard 100 (sets limits for maximum content of formaldehyde, pesticides, PCBs, heavy metals, azo dye, arylamine flame-retarding agents, phthalates, volatile organic substances, biocides and other substances.)
-----------	--


STANDARD COLORS	Please confirm availability with your Red Wing representative. Special order colors available upon request.
-----------------	---


WASH AND CARE


Standard home, commercial and industrial laundering is appropriate. When laundering instructions are followed, shrinking tolerance is typically 3-5% (Fabric Code 50) and 2-3% (Fabric Code 65).

 Machine wash normal:
Unlined: max 60° C / 140° F
Insulated: max 40° C / 104° F

 Do not bleach

 Iron medium heat:
max 150° C / 300° F

 Dry clean: any solvent
except trichloroethylene

 Tumble dry normal:
low heat

Do not use cleaning agents containing organic soap, chlorine bleach, hydrogen peroxide or any bleaching agent.

Do not use softeners or starch.

Red Wing industrial workwear garments made from cotton or a polyester/cotton blend deliver comfort and confidence for workers across the globe. These versatile and durable products meet our high standards for superior construction, and are rigorously tested for fit, wear and comfort. With the wearer's needs always our top concern, each garment is designed to meet a specific task. We understand that superior comfort is a necessity.

Cotton Features

- Soft, lightweight and pliable, cotton fabric can be comfortably worn directly against the skin.
- Extremely versatile, cotton adds warmth in cold weather and also breathes and feels cooler than many synthetic fabrics in warm conditions.
- As a natural fabric, cotton has the ability to attract moisture and transfer it away from the body, keeping the wearer dry and comfortable.
- Predictably durable, cotton offers good wear and performance.
- Lightweight and breathable, 6 oz. (200 g) cotton fabric performs well in a variety of conditions and is particularly well-suited for use in hot or humid climates.

Polyester/Cotton Features

- Made of a blend that includes durable polyester and comfortable cotton this pliable fabric can be worn directly against the skin or over inner layers as an outer shell.
- Ability to attract moisture and transfer it away from the body, keeping the wearer dry and comfortable.
- Predictably durable, the polyester/cotton blend offers excellent wear and performance.
- Lightweight, breathable and versatile, 6 oz (200 g) polyester/cotton blend fabric performs well in a variety of climate conditions and is particularly well-suited for use in temperate climates.

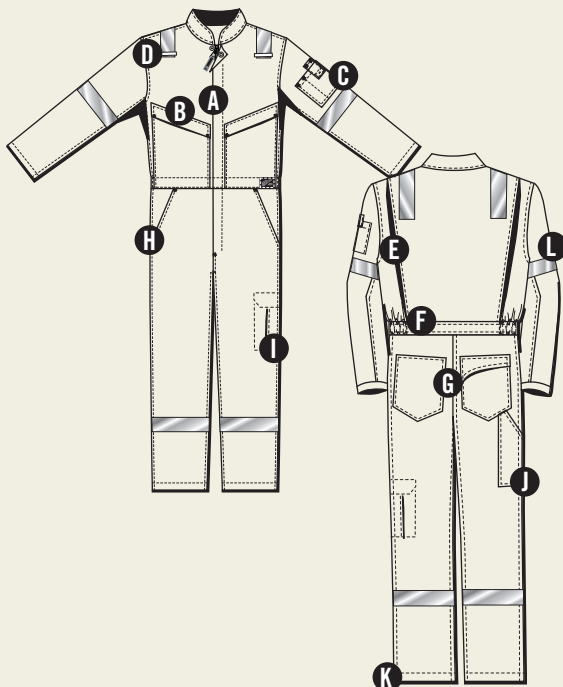
Men's FR Coverall
61811

PRODUCT NUMBER		61811
FABRIC MATERIAL		
Red Wing FlashGuard® TM		•
FABRIC WEIGHT		
6.5 oz / 220g		•
FABRIC COLOR*	COLOR CODE	
Orange	57	•
Royal Blue	54	•
COMPLIANCE		
FLAME RESISTANT		
Heat and Flame (EN ISO 11612)		•
Electric Arc Flash (IEC 61482-2, Class 1)		•
CAT2 (ASTM F1959)		•
Anti-static (EN 1149-5)		•
SIZES		
Regular 34-58		•



Deluxe lightweight, vented coverall features a great fit and YKK® non-sparking zips throughout. Features nine pockets, including a cargo pocket on the left leg. Press studs are covered on the inside, so nothing but soft protective material comes in contact with your skin. Major seams are double-stitched and stress points are bar-tacked for strength.

- (A) Concealed two-way, black high density polyester coil zips with press stud closure
- (B) Two chest pockets with concealed zip closure
- (C) Left sleeve pocket with pen pocket divider, small flap with hook-and-loop closure
- (D) Two radio loops
- (E) Knitted, flexible FR fabric under arms and in back pleats for ventilation and freedom of movement
- (F) Elasticized waistband
- (G) Two back pockets, right side with flap
- (H) Two side pockets with hidden exterior-to-interior access and press stud closure
- (I) Cargo pocket with separate mobile phone and pen pocket on left leg
- (J) Ruler and tool pocket on right leg
- (K) Concealed press studs on cuffs and ankle openings
- (L) 2" (50mm) wide reflective FR striping around arms, legs and over the shoulders



Loops on shoulders for radio antennae



Flexible vented cooling system

Men's FR and Non-FR Coverall

Series 601/611

PRODUCT NUMBER	NON-REFLECTIVE			60140	
	REFLECTIVE	61111	61115		61140
FABRIC MATERIAL					
	Red Wing FlashGuard® TM	•			
	Daletec®		•		
	100% Cotton			•	•
FABRIC WEIGHT					
	6 oz / 200g			•	•
	6.5 oz / 220g	•	•		
FABRIC COLOR*	COLOR CODE				
Orange	57	•	•		•
Red	55	•	•	•	
Navy Blue	53		•	•	
Royal Blue	54			•	
Petro Blue	52			•	
Tan	51			•	
COMPLIANCE					
FLAME RESISTANT					
	Heat and Flame (EN ISO 11612)	•	•		
	Electric Arc Flash (IEC 61482-2, Class 1)	•	•		
	CAT2 (ASTM F1959)	•			
	Anti-static (EN 1149-5)	•	•		
SIZES					
	Regular 34-60	•	•	•	•

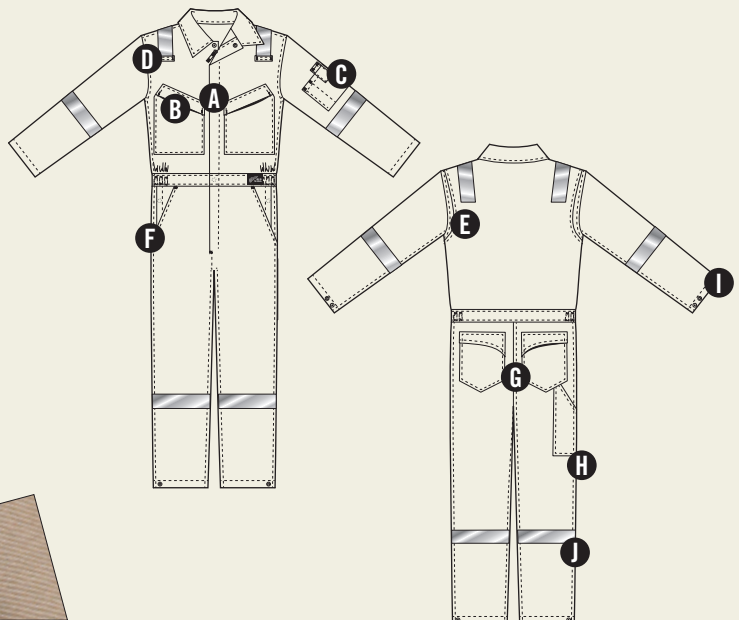


This classic coverall provides optimal comfort, mobility and functionality, plus excellent badging flexibility. It features eight pockets and YKK® non-sparking zips throughout. Press studs are covered on the inside, so nothing but soft protective material comes in contact with your skin. Major seams are double-stitched, with stress points bar-tacked for added strength. 50mm (2") reflective FR striping ensures high visibility for safety.

- (A) Concealed two-way, black high density polyester coil zips with press stud closure
- (B) Two chest pockets with concealed zip closure
- (C) Left sleeve pocket with pen pocket divider, small flap with hook-and-loop closure
- (D) Two radio loops at shoulders
- (E) Shoulder pleats for freedom of movement and comfort
- (F) Two side pockets with hidden exterior-to-interior access and press stud closure
- (G) Two back pockets, right side with flap
- (H) Tool pocket on right leg
- (I) Concealed press studs on cuffs and ankle openings
- (J) 50mm (2") wide reflective striping around arms, legs and over the shoulders



Shoulder pleats maximize range of movement, ensuring wearers are able to move around with more flexibility and comfort on the job.



Men's **FR** Coverall
71111

PRODUCT NUMBER		71111
FABRIC MATERIAL		
Red Wing FlashGuard® TM		•
FABRIC WEIGHT		
6.5 oz / 220g		•
FABRIC COLOR*	COLOR CODE	
Orange	57	•
Royal Blue	54	•
COMPLIANCE		
FLAME RESISTANT		
Heat and Flame (EN ISO 11612)		•
Electric Arc Flash (IEC 61482-2, Class 1)		•
CAT2 (ASTM F1959)		•
Anti-static (EN 1149-5)		•
SIZES		
Short 32-50 / Reg 32-58 / Tall 40-58		•

This coverall has a classic look and a great fit. It features eight pockets and YKK® non-sparking zips throughout. Press studs are covered on the inside, so nothing but soft protective material comes in contact with your skin. Major seams are double-stitched and stress points are bar-tacked for strength.

- (A) Concealed two-way, black high density polyester coil zips with press stud closure
- (B) Two chest pockets with concealed zip closure
- (C) Left sleeve pocket with pen pocket divider, small flap with hook-and-loop closure
- (D) Action back pleats for freedom of movement and comfort
- (E) Elasticized waistband
- (F) Two side pockets with hidden exterior-to-interior access and press stud closure
- (G) Two back pockets, right side with flap
- (H) Knee pad pockets (knee pads (69085 pg 44) sold separately)
- (I) Ruler and tool pocket on right leg
- (J) Concealed press studs on cuffs and ankle openings
- (K) 1" (25mm) wide reflective FR striping on arms, legs & over the shoulders

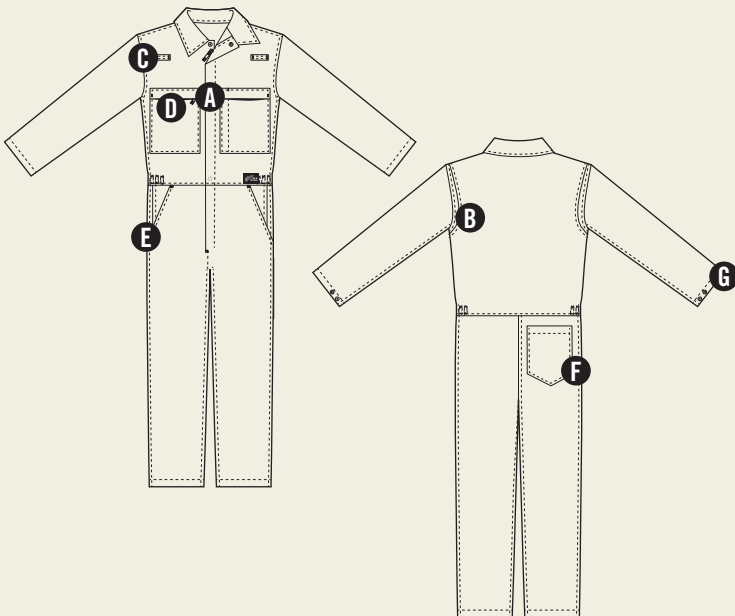


Men's Non-FR Coverall 60640

PRODUCT NUMBER		60640
FABRIC MATERIAL		
100% Cotton		•
FABRIC WEIGHT		
6 oz / 200g		•
FABRIC COLOR*	COLOR CODE	
Tan	51	•
SIZES		
Regular 36-56		•

This coverall has a great look and fit. It features five pockets and YKK® non-sparking zips throughout. Major seams are triple-stitched, with stress points bar-tacked for added strength. 50 mm (2") reflective FR striping ensures high visibility for safety.

- (A) Concealed two-way, black high density polyester coil zip with press stud closure
- (B) Shoulder pleats for freedom of movement and comfort
- (C) Two radio loops
- (D) Two chest pockets, one with concealed polyester coil zip (right), one with storm flap and opening for a pen (left)
- (E) Two side pockets with hidden exterior-to-interior access and press stud closure
- (F) Back pocket
- (G) Concealed press studs throughout



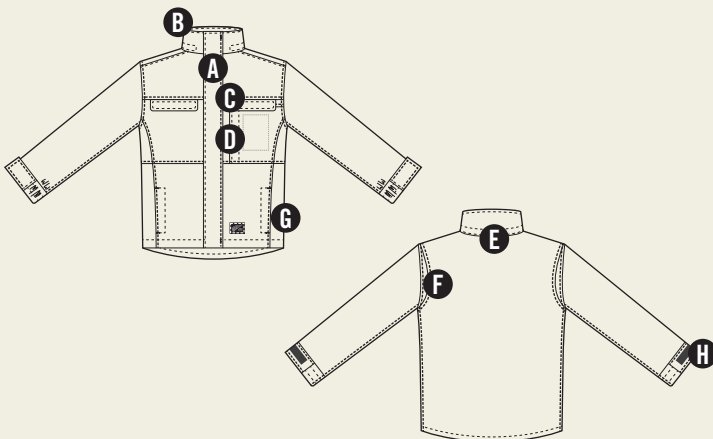
Shoulder pleats maximize range of movement, ensuring wearers are able to move around with more flexibility and comfort on the job.

PRODUCT NUMBER		62915	62965
FABRIC MATERIAL			
Daletec®		•	
65% Polyester, 35% Cotton			•
FABRIC WEIGHT			
6.5 oz / 220g		•	
6 oz / 200g			•
FABRIC COLOR*	COLOR CODE		
Navy Blue	53	•	•
COMPLIANCE			
FLAME RESISTANT			
Heat and Flame (EN ISO 11612)		•	
Electric Arc Flash (IEC 61482-2, Class 1)		•	
Anti-static (EN 1149-5)		•	
PERFORMANCE			
Wind & Water Repellency*		•	
Polyester Fiberfill*		•	•
SIZES			
Regular S-3XL		•	•



This roomy work jacket offers a concealed non-sparking YKK® front zipper and is fully insulated with 100g polyester fiberfill insulation. Major seams are double-stitched and stress points are bar-tacked for strength.

- (A) Concealed one-way, black high density polyester coil zip with hook-and-loop closure
- (B) High collar
- (C) Two chest pockets, with hook-and-loop closure and storm flaps; left chest pocket with an additional external pocket with vertical zipper access.
- (D) One inside chest pocket
- (E) Concealed zipper in collar for hood (hood sold separately)
- (F) Shoulder pleats for freedom of movement and comfort
- (G) Two side pockets with fleece lining
- (H) Adjustable cuffs
- (I) Zipper pull left side



Shoulder pleats maximize range of movement, ensuring wearers are able to move around with more flexibility and comfort on the job.

*The 62915 jacket is undergoing an inline insulation transition. Inventory is FIFO.

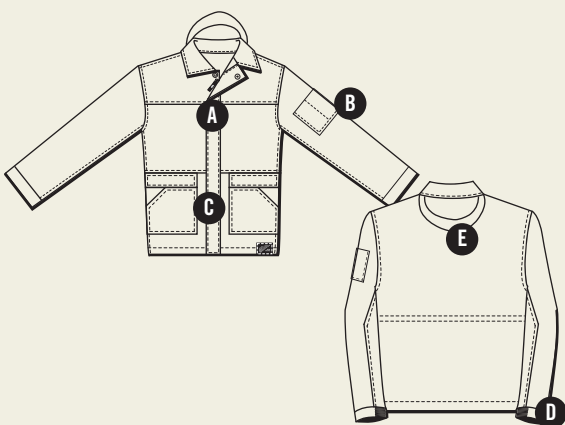
Men's FR Jacket 72315

PRODUCT NUMBER		72315
FABRIC MATERIAL		
Daletec®		•
65% Polyester / 35% Cotton		
FABRIC WEIGHT		
6.5 oz / 220g		•
FABRIC COLOR*	COLOR CODE	
Orange	57	•
Royal Blue	54	•
COMPLIANCE		
FLAME RESISTANT		
Heat and Flame (EN ISO 11612)		•
Electric Arc Flash (IEC 61482-2, Class 1)		•
Anti-static (EN 1149-5)		•
PERFORMANCE		
Wind & Water Repellency*		•
Polyester Fiberfill*		•
SIZES		
Regular S-4XL		•



This hip-length jacket offers a heavy-duty zip and is fully insulated with 200g polyester fiberfill insulation. Major seams are double- or triple-stitched and stress points are bar-tacked for strength.

- (A) Concealed one-way, black coil high density polyester coil zips with brass snap closure
- (B) Double pen pocket on left sleeve
- (C) Two deep, vertical-opening front pockets
- (D) Elasticized cuffs
- (E) Concealed hood tucks into collar



*The 72315 jacket is undergoing an inline insulation transition. Inventory is FIFO.

Men's Softshell Jacket 69018

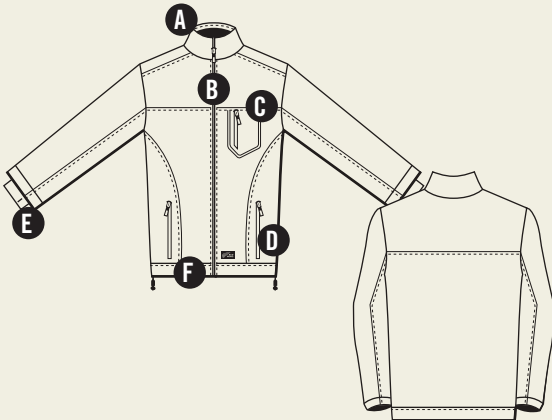
PRODUCT NUMBER		69018
FABRIC MATERIAL		
Melange: 90% Polyester, 10% Cotton		•
Black Panels: 93% Polyester, 7% Spandex		
FABRIC COLOR*	COLOR CODE	
Melange Gray, Black	93	+
PERFORMANCE		
Windbreak		•
Moisture-wick		•
SIZES		
Regular S-4XL		•

(+) Available by special order



This functional softshell jacket has a TPU membrane for water-resistance and is fully-lined with brushed fleece for warmth. It features five pockets and draw cords at the bottom for a snug fit.

- (A) High collar
- (B) Full length zip closure
- (C) Waterproof phone pocket on the chest
- (D) Two side pockets with zip closure
- (E) Wrist sleeve with thumb hole
- (F) Draw cords at bottom sides of jacket



Wrist sleeve with thumb hole



Embroidered Red Wing logo on back of collar



Internal side pockets



Men's Softshell Jacket

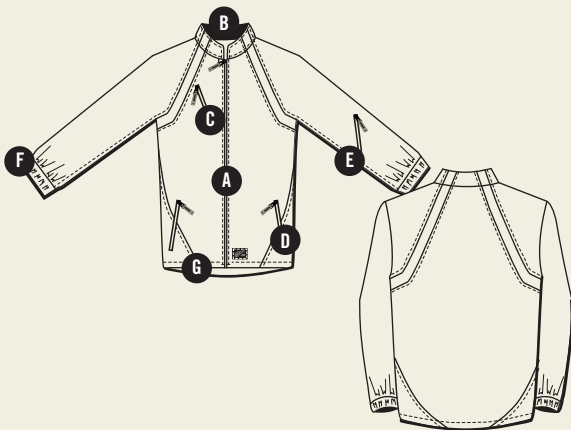
69007

PRODUCT NUMBER		69007
FABRIC MATERIAL		
93% Polyester, 7% Spandex, TPU Membrane		•
FABRIC COLOR*	COLOR CODE	
Red / Black	62	•
Orange / Black	60	+
Royal Blue / Navy	75	+
Navy	53	+
PERFORMANCE		
Windproof		•
SIZES		
Regular S-4XL		•



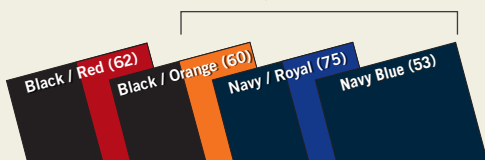
This functional soft-shell jacket is water-resistant and fully-lined for warmth.

- (A) Full length zip closure
- (B) High collar
- (C) Chest pocket with zip closure
- (D) Two side pockets with zip closure
- (E) Sleeve pocket with zip closure
- (F) Elasticized cuffs with thumb holder
- (G) Draw cords at waist



Elastic cuffs with thumb holder

(+) Check with your distributor for availability of other color combinations.



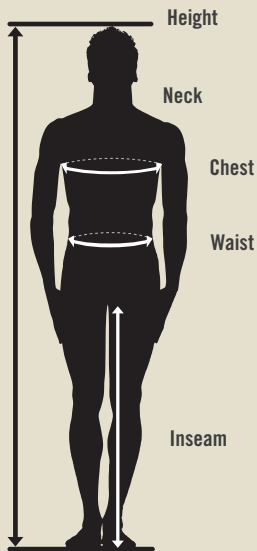
WORKWEAR FIT

Key measurements to ensure proper garment fit.



Purpose-built for the work you do, our industrial workwear is designed to fit so well, so comfortably, that it may not even seem like personal protective equipment. Key measurements necessary to ensure the best possible fit include: Height, Neck, Chest, Waist, and Inseam. Refer to each product listing for specific measurements.

For best fit, measurements should be taken directly from the body. (Room for movement is already calculated into garment dimensions.)



JACKET SIZING		
CHEST	INCH / CM EQUIVALENT	
S	36"-38"	92-97 cm
M	38"-42"	97-107 cm
L	42"-46"	107-117 cm
XL	46"-50"	117-127 cm
2XL	50"-54"	127-137 cm
3XL	54"-58"	137-147 cm
4XL	58"-62"	147-157 cm
HEIGHT	INCH / CM EQUIVALENT	
Regular	up to 6' 1"	up to 185 cm

Additional sizes and color options available, contact your Red Wing representative for more information.

COVERALL SIZING			
CHEST	EU/RU EQUIVALENT	INCH / CM EQUIVALENT	
34	44	32"-34"	82-86 cm
36	46	34"-36"	86-92 cm
38	48	36"-38"	92-97 cm
40	50	38"-40"	97-102 cm
42	52	40"-42"	102-107 cm
44	54	42"-44"	107-112 cm
46	56	44"-46"	112-117 cm
48	58	46"-48"	117-122 cm
50	60	48"-50"	122-127 cm
52	62	50"-52"	127-132 cm
54	64	52"-54"	132-137 cm
56	66	54"-56"	137-142 cm
58	68	56"-58"	142-147 cm
60	70	58"-60"	147-152 cm
HEIGHT	INCH / CM EQUIVALENT		
Short	up to 5' 9"	up to 175 cm	
Regular	up to 6' 1"	up to 185 cm	
Tall	up to 6' 4"	up to 196 cm	

WORKWEAR TECHNOLOGY & COMPONENTS

Beyond our selection of premium FR fabrics, every Red Wing industrial workwear garment is crafted using state-of-the-art materials, superior construction and undergoes rigorous testing for safety, fit and wear. From underwear to outerwear, our products are built with purpose.



Loxy®

Red Wing workwear is outfitted with durable, reflective tapes from Loxy®, the world's largest distributor and producer of seam sealing and reflective tapes.

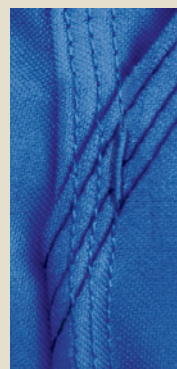


Red Wing workwear utilizes fasteners manufactured by YKK®, the world's leading designer, developer, manufacturer and supplier of quality fastening.



A&E® is one of the world's foremost manufacturers of industrial sewing threads and yarns. A&E delivers exact color, superior quality and the most innovative products, right where they are needed.

QUALITY THREAD, TRIPLE-STITCHED* AND BAR-TACKED MEANS QUALITY SEAMS



Thread only makes up a small percentage of the cost of the garment but shares 50% of the responsibility for the seam. By using only thread that meets rigorous Red Wing standards, we engineer quality into every Red Wing garment.

Threads used in Red Wing garments are tested to prevent excessive:

- Thread breakage.
- Skipped stitches.
- Repairs and restitched seams.
- Seam failures.

Red Wing Wind & Water Repellency

Red Wing Wind & Water repellency is now available on select-winter garments.



- Wind & water protection in light rain/snow conditions will keep wearers warm and dry
- Protective engineered coating is breathable, ensuring wearers are comfortable on the job

Engineered coating lasts the average lifecycle of a winter garment, 15-20 washes. Performance will be reduced over time. This feature is not intended for use in heavy rain/snow conditions. In those cases, a fully waterproof solution should be used.

*Seams are double-stitched and bar-tacked on all garments constructed using fabric less than 7 oz unless otherwise noted.



PURPOSE-BUILT
ACCESSORIES



MASTER SERIES | MASTER FLEX



95247

- 01 – Woven ID label
- 02 – Elastic band with hook and loop rubber pull tab closure
- 03 – Terry cloth thumb material to wipe away sweat
- 04 – Premium synthetic leather palm with silicone print pattern for enhanced grip
- 05 – Touch screen compatible material on thumb, index and middle finger tips
- 06 – High performance spandex material on top of hand for durability

SIZES SML, MED, LRG, XLG, XXL

MASTER SERIES | MASTER PRO



95248

- 01 – Woven ID label
- 02 – Elastic band with hook and loop rubber pull tab closure
- 03 – Terry cloth thumb material to wipe away sweat
- 04 – Premium synthetic leather palm and patches for increased abrasion resistance
- 05 – Touch screen compatible material on thumb, index and middle finger tips
- 06 – Medium duty TPR (Thermoplastic Rubber) for impact protection on fingers
- 07 – High performance spandex material on top of hand for durability

SIZES SML, MED, LRG, XLG, XXL

MASTER SERIES | MASTER ELITE



95249

- 01 – Woven ID label
- 02 – Elastic band with hook and loop rubber pull tab closure
- 03 – Terry cloth thumb material to wipe away sweat
- 04 – PVC padded palm patch for enhanced grip and abrasion resistance
- 05 – Premium synthetic leather patches for increased abrasion resistance
- 06 – Touch screen compatible material on thumb, index and middle finger tips
- 07 – Heavy duty TPR (Thermoplastic Rubber) for impact protection on fingers
- 08 – High performance spandex material on top of hand for durability

SIZES SML, MED, LRG, XLG, XXL

MASTER SERIES | MASTER GRIP



95251

- 01 – Woven ID label
- 02 – Elastic band with hook and loop rubber pull tab closure
- 03 – Terry cloth thumb material to wipe away sweat
- 04 – Premium synthetic leather palm with proprietary grip technology for enhanced grip on palm
- 05 – Touch screen compatible material on thumb, index and middle finger tips
- 06 – High performance spandex and mesh fabric on top of hand for durability

SIZES SML, MED, LRG, XLG, XXL

69186 Ringer® R-259B Gloves

- FEATURES**
- TPR impact protection on top of hand and full length of fingers
 - Waterproof barrier to keep hands dry
 - Durable synthetic leather palm for enhanced grip
 - CE rated for EN388 level 5 cut resistance and level 4 puncture resistance
 - ANSI/ISEA rated for level 6 cut resistance
 - Kevlar stitched palm reinforcement
 - Liquid resistant coating on top of hand
 - Extended neoprene wrist closure
 - High visibility colors for increased safety
- SIZES** 8, 9, 10, 11, 12, 13



69185 HexArmor 2025® Rig Lizard® Gloves

- FEATURES**
- Durable TP-X+® palm provides industry-leading abrasion resistance and highly specialized grip for dealing with saturated or oily situations
 - Cut level 4 SuperFabric® (interior layer) provides industry-leading cut and abrasion resistance
 - Improved IR-X® Impact Exoskeleton™ delivers protection with better dexterity
 - Additional IR-X® guard between thumb and index finger secures common catch points
 - Reinforced seams add durability and extend glove life
 - SlipFit® cuff with pull tab for easy on/off
 - Name tag for easy identification
 - Hi-vis color scheme provides increased hand awareness
 - Machine washable
- SIZES** 6, 7, 8, 9, 10, 11, 12



69182 Ringer® R-65 Gloves

- FEATURES**
- TPR impact protection on top of hand and full length of fingers
 - High visibility finger, TPR, and palm for increased safety
 - CE rated level 5 cut resistance and level 3 puncture resistance
 - Tough and soft nitrile foam dipped breathable knit shell
 - Superior grip on wet and dry surfaces
 - Excellent dexterity for all working conditions
 - Machine washable
- SIZES** 8, 9, 10, 11, 12, 13



69184 HexArmor® Thin Lizzie™ 2090 Gloves

- FEATURES**
- 13-gauge high-performance polyethylene and glass fiber blend shell protects hands from cut hazards while allowing maximum dexterity
 - IR-X® Impact Exoskeleton™ with new and improved high-flex design protects against forceful blows to the back-of-hand
 - Abrasion-resistant sandy nitrile palm dip provides exceptional grip in saturated situations
 - Machine washable
- SIZES** 7, 8, 9, 10



BACKPACK

NEW

69019

COLOR CODE 58

- FEATURES**
- Heavy-duty bag made of ballistic nylon for durability
 - Easy grab, padded handle
 - Adjustable, padded shoulder straps
 - Rugged, durable zippers
 - Built in USB port for charging on the go using a portable battery
 - Front utility pocket
 - Multiple interior and exterior pockets for stowing beverage bottles and other small items
 - Lays flat for easy inspection at TSA checkpoints
 - Padded compartment protects laptops (up to 15" size)
 - Tablet sleeve
 - Hands free travel design with padded strap that slides over luggage handle
 - Umbrella pocket
 - Detachable phone case on shoulder strap
- DIMENSIONS** 19"H x 14"W x 8"D
48 cm x 35 cm x 20 cm



SAFETY GLASSES (FEATHERLIGHT)

- LENSES**
- Made from purity optical grade/Polycarbonate
 - Absorbs 99.9% harmful UV light
 - Curved lenses offer fit with unlimited wrap around protection
- STANDARDS**
- Meets or exceeds ANSI Z87.1 standard
 - CE EN166 certified
 - CE EN 166 N anti-fog (Clear/Tinted lens) and K anti-scratch requirements



95212 CL: Clear

Incredibly lightweight, resilient and durable

- FEATURES** Featherlight - weighs only 16 grams
- FIT** Lightweight, flat temples are free from pressure
Universal-fit nose bridge



95212 SK: Smoke



95212 AM: Amber



95212 IO: Cool I/O

SMALL OFFSHORE BAG



69101

FEATURES

- Heavy-duty bag made of ballistic nylon for durability
- Ideal for egress to helicopter bays
- Side-by-side full-open top zip for easy access
- Multiple side zip compartments for stowing boots, dirty clothes and other gear
- Optional padded backpack straps are adjustable/removable
- Detachable/adjustable, padded shoulder strap included
- Padded handles
- Rugged, durable zippers
- ID card pocket

DIMENSIONS 21" L (54 cm) x 14" W (36 cm) x 12" D (31 cm)

LARGE OFFSHORE BAG



**Available in Black/Red (62) only*

69100

FEATURES

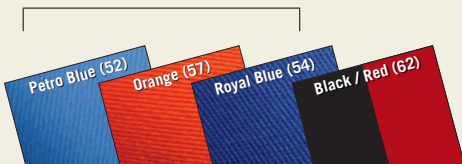
- Heavy-duty bag made of ballistic nylon for durability
- Ideal for egress to helicopter bays
- Side-by-side full-open top zip for easy access
- Multiple side zip compartments for stowing boots, dirty clothes and other gear
- Sturdy in-line wheel system and locking telescopic handle with push button operation for easy transport
- Detachable/adjustable, padded shoulder strap included
- Padded handles
- Rugged, durable zippers
- ID card pocket

DIMENSIONS 28" L (71 cm) x 16" W (41 cm) x 16" D (41 cm)

Pullout handle and wheels



**Other color options can be ordered only factory direct with MOQ.*



RED WING DISTRIBUTORS

MIDDLE EAST

KINGDOM OF BAHRAIN

Kooheji Industrial Safety

PO Box 709
Manama
Kingdom of Bahrain
Tel: +973 1773 0002
Fax: +973 1791 0215
ksafety@batelco.com.bh

IRAQ

Horizon Oil & Gas

Al Haretheya
Hay Alkindi M213-Z26-D06
Baghdad, Iraq
Tel: +964 781 899 7807
Tel: +964 750 858 0816
safety@horizonoilgas.com

Dream Safety for Oil Supplies & Services

Kazna Road
Erbil 44001 – Iraq
Tel: +964 782 780 5672
Tel: +964 782 780 5679
info@ds-oss.com

KUWAIT

Fares Al Dabbous & Sons Trading Co.

W.L.L.
HQ - Ahmadi: Bld. 126, Street 400,
Block 7
Ahmadi (East), Kuwait 64002
Tel: +965 2398 9208/308/408
faresco@faresaldabbous.com
faresaldabbous.com

Fares Al Dabbous & Sons Trading Co.

W.L.L.
BR - Fahaheel: Bld. 67, Al Dabbous
Street
Fahaheel Industrial Area, Kuwait 64002
Tel: +965 2391 4787/4719
faresco@faresaldabbous.com
faresaldabbous.com

Fares Al Dabbous & Sons Trading Co.

W.L.L.
BR - Shuwaikh: Bld. Muroj, Khalifa Al
Jassim St,
Block-A Shuwaikh Industrial Area-3,
Kuwait 64002
Tel: +965 2492 2942
faresco@faresaldabbous.com
faresaldabbous.com

OMAN

Oman Oil Industry Supplies & Services
Co. LLC
Building No. 89, Way No. 6605, Al
Omran Street
Ghala Industrial Area,
Muscat, Sultanate of Oman
Tel: +968 24 117751
Mobile: +968 93200425
dlali@ooiss.com

QATAR

Jaidah Motors & Trading Company
P.O. Box 150, Doha - Qatar
Industrial Area, Street # 24, Gate # 1
Tel: +974 44638777
youssef.zeitoun@jaidah.com.qa

SAUDI ARABIA

Tamimi Company

PO Box 230
Al Khobar, Saudi Arabia 31952
Tel: +966 13 895 1128
Fax: +966 13 894 4706
safetysales@al-tamimi.sa

TURKEY

Sekerciler Denizcilik San. ve Tic. Ltd.

Evlia Celebi Mah. Uyum SK. No: 3
Icmeler Tuzla
Istanbul, Turkey
Tel: +90 216 447 51 51
info@sekercilergroup.com

UNITED ARAB EMIRATES

Al Masaood Oil & Gas

PO Box 4352
Abu Dhabi, UAE
Tel: +971-2-626-7666
Fax: +971-626-2106
krishnan@amoilgas.com

Al Masaood Trading

Al Qusais Industrial Area 5
Plot No. 368 Qusais
PO Box 60932
Dubai, UAE
Tel: +971 4 285 0911
Fax: +971 4 514 6901
awad@amtrd.com

YEMEN

Asharq Masaood International

No. 13, 12th Street of Algiers Street
Sana'a, Republic of Yemen
Tel: +967 1 448 111
Fax: +967 1 448 200
majed.maarouf@amiyemen.com

AFRICA

ANGOLA

Nasa Comercial, Lda

Rua Direita da Cimangola
Edificio da Pex Hidraulica
Luanda, Angola
Tel: +244 923 416313
graham@nasacomercial.com

CAMEROON and CHAD

Business Trade Cameroon Sarl

Rue Boue De Lapeyrere
Akwa, Douala, BP12565
Cameroon
Tel: +237 33 43 25 09
eenonsoume@btc-cameroon.com

CONGO

Delta Pro Congo

12 Avenue Jacques Opangault Z.I la
Foire
BP 5627 Pointe-Noire
Congo
Tel: +242 (06) 440 21 74
v.doumergue@deltaprogroup.com

EGYPT

Yehia Abdin Co.

1371 Kornish El-Nile St.,
Aghakhan Towers, no 10,
Cairo, Egypt
Tel: +20 2 22055047 - 8
Mobile: +20 1223140000
Fax: +20 2 22036909
info@yehiaco.com

Tam Oilfield Services

4D Guezira Street
Zamalek, Cairo, 11211
Egypt
Tel: 202 27364529
i.meabed@tamoilfield.com
tamoilfield.com

EQUATORIAL GUINEA

NomeX

Avenida Hassan II, no16
P.O. Box 999
Malabo, Equatorial Guinea
Tel: +240 333096613
bmakendengue@victorexeg.com

GABON

Delta Pro

Z.I OPRAG - Nouveau port
BP 30 Port-Gentil
Port-Gentil, Gabon
Tel: +241 06 22 90 72
Tel: +241 01 56 90 88
Fax: +241 01 70 47 32
pog@deltaprogabon.com

GHANA

Energem Ltd
8th Floor, One Airport Square
Airport City
Accra, Ghana
Tel: +233 50 404 8000
procurement@energemghana.com

KENYA

Specialised Hardwares Ltd

37 Busia Road
Off Enterprise Road
Nairobi, Kenya
Tel: +254 20 2512734/5/6/7
dipak@specialisedkenya.com

LIBYA

Masoil

Karachi St. No. 14
PO BOX 4438
Tripoli, Libya
Tel: +218 28 722 220
Mobile: +218 91 3100151
sales@masoil.com.ly

Mercanta Handelsgesellschaft

Volker Schramboeck
Keimlgutgasse 37
Linz, Austria
Tel: +43 732 738162
Fax: +43 732 7381629
volker.schramboeck@mercanta.com

NIGERIA

Future Concerns

3, Chris Efuyemi Street
Lekki, Lagos, Nigeria
Tel: +234 1 2706561
Fax: +234 1 2706563
techsupport@futureconcerns.com

TANZANIA

Allied Mining Services Limited

Nyakato Industrial Area
PO Box 2260
Mwanza, Tanzania
Tel: +255 28 2571561/62/63
bindiya@alliedgroup.co.tz

UGANDA

Bakawa and Sons Holding Ltd

Plot 2/P.O.Box 28654, Kampala,
Kampala, Ouganda
Tel: +256 41 4347705
bakawa@infocom.co.ug

ASIA

BRUNEI DARUSSALAM

Belait Shoe Manufacturer

Unit 7 & 8, Block D, Lot 8982
Bangunan MJJR, Kampong Pandan
Empat
Jalan Jaya Negara, Kuala Belait KA1931
Brunei & East Malaysia
irenewai@belaitshoe.com

CHINA & HONG KONG

Teedo Safety Co. Ltd.

Room 1820, Suite B
No. 16 Guang Shun Nan Ave, Chao
Yang District
Beijing 100102 China
Tel: +86-10-8476-3742
Fax: +86-10-8476-3421
jason.xie@teedosafety.com

INDIA

Shree Lalita

7-C, Laxmi Ashish Industrial
Premises, New Link Road
Andheri – West, Mumbai 400 053
India
Tel: +91 22 6570 2643
shreelalita@vsnl.com

Now Distribution India Pvt. Ltd.

Office No. 509
Building No. A1
Rupa Solitaire, Millennium Business
Park
ThaneBelapur Highway
Mahape, Navi Mumbai 400710
Maharashtra, India
Tel: +91 22 4138 6900
DE-IND-Sales@dnow.com

RED WING STORES

Tobit Engineers

A-3/B SaiBaba Industrial Estate
Marol Andheri (East)
Mumbai 400 059, India
Tel: +91-22-66919392
info@tobitengineers.co.in

INDONESIA

PT Hengtraco Protecsindo

Jl. P.Jayakarta No 93 BC
Jakarta Pusat, Indonesia
Tel: +62 21 6399195
rudy.said@hengtracogroup.com

KAZAKHSTAN

Group KZ, LLP

(a DNOW company)
Kabdolov Ave. 62 Industrial Zone
Atyrau, Kazakhstan
Tel: +7 7122 766116
groupkzsales@dnow.com

Scot Global LLP

Temirhanova 1
Atyrau, West Kazakhstan 60002
Tel: +7 7122 586878
akkumis@scot-global.com

KOREA

Top Marine Company

4077, Geoje-daero,
Yeoncho-myeon
Gyeon-City, Gyeongnam 53211
Korea
Tel: +82 (0)55 688-3178
ngpark@topmarine.kr

MALAYSIA

Leeden SDN BHD

Lot 9, Jalan Api-Api 26/1
Seksyen 26, 40400 Shah Alam
Selangor Darul Ehsan
Malaysia
Tel: +6 03 5101 6999
sales.my@leeden.com.my

PAKISTAN

Paul Olson
Tel: +1 651 385 1310
Paul.Olson@redwingshoes.com

RUSSIA

DistributionNOW -

Yuzhno-Sakhalinsk
Sakhalinskaya str. 157
Yuzhno-Sakhalinsk, 693005
Russia
Tel: +7 4242 725611
DS-RUS-SALES@DNOW.COM
distributionnow.com

DistributionNOW - Nizhnevartovsk

Bld 11, 3P Str. Lenina,
Nizhnevartovsk, Russia 628600
Tel: +7 3466 310 427
DS-RUS-SALES@DNOW.COM
distributionnow.com

SINGAPORE

Leeden Safety

No. 1 Shipyard Road
Jurong Industrial Estate
Singapore 628128
Tel: 65 62681221
sgsales.safety@leedennox.com

THAILAND

Leeden Thailand Co., Ltd.

11/88 Moo 8, Sukhumvit Road,
Banglamung Sub District, Banglamung
District,
Chonburi 20150
Thailand
Tel: +66 38 241028
pady@leedenlimited.com

UKRAINE

Ukpromzahist Ltd.

53, Volynskaya str.
Kiev, Ukraine
Tel: +380 44 2432324
sergey@ozon.com.ua

SOUTH PACIFIC

AUSTRALIA

Country & Western Boot Co. Pty. Ltd.

380 Burnley Street
Melbourne 3121
Australia
Tel: +61-03-9427-0422
sales@redwingshoes.com.au

DNOW Brisbane

49 Campbell Ave
Wacol, Brisbane, Queensland 4076
Australia
Tel: +61 07 3718 8500
wacolsales@dnow.com

DNOW Perth

3 Aurora Entrance
High Wycombe, Perth WA 6106
Australia
Tel: +61 8 6254 7800
welshpoolsales@dnow.com

DNOW Roma

17 Linton Street
Roma, Queensland 4455
Australia
Tel: +61 07 3718 8500
romasales@dnow.com

GUAM AND SAIPAN

Safety 1st Systems, Inc.

145 E. Harmon Industrial Park Road
Unit A
Tamuning 96913
Guam
Tel: +1 671 649 6440
dtsellers@safety1st.com.gu

NEW ZEALAND

JS Langen Agencies LTD / Wholesafe

4 Whyte Street
PO Box 40
Foxton 4814
New Zealand
Tel: +64 6 363 7311
judy@wholesafe.co.nz

PAPUA NEW GUINEA

Supreme Industries Ltd

Sec 451, Lot 2, Cameroon Rd Gordons
PO Box 2320
Boroko, Port Moresby, N.C.D.
Papua New Guinea
Tel: +675 323 6000
sanjay@silpng.com

DUBAI

GF, Unit #1, Palladium Building
Sheikh Zayed Road
Al Quoz Industrial 3
Dubai, United Arab Emirates
Tel: +971 4 2972797
rwdubai@amtrd.com

ABU DHABI

374 Corniche Road, M-05
Mussafah Industrial
Abu Dhabi, United Arab Emirates
Tel: +971 2 5554083 rwmussafah@
amoilgas.com

ABU DHABI - DOWNTOWN

40 Al Douj Street (Salam / Electra)
Behind UNB Head Office
Abu Dhabi, United Arab Emirates
Tel: +971 2 6761411 rwabudhabi@
amoilgas.com

BAHRAIN

Block: 606, Road: 31, Shop: 633, PO
Box: 709
Area: Al Kharijyah - Sitra
Bahrain
Tel: +973 17 73 0002
redwing@koohejsafety.com

KUALA LUMPUR

Level 1, Unit L1-16, Avenue K
156 Jalan Ampang
Kuala Lumpur, Malaysia 50450
Tel: +60 3 2181 3636
redwing.avenuek@leeden.com.my

KHOBAR

Custodian of The Two Holy Mosques Rd
Al Khobar Al Janubiyah
Al Khobar 34621, Saudi Arabia
T: +966 13 8951128 Ext: 168

JUBAIL

Al-Buhasson Building
Al Madinah Al Munawwarah cross
Prince Mashhoor Rd
Jubail, Saudi Arabia
T: +966 13 361 1581
M: +966 50 928 4925

YANBU

Jeddah Road
Yanbu Al Bahr, Saudi Arabia
T: +966 14 390 8091
M: +966 50 481 6299

PRODUCT INDEX

FOOTWEAR

2233.....9	3229.....9	8217.....5
2375.....7	6338.....6	8218.....5
3210.....7	6343 NEW6	8219.....5
3202.....8	6344 NEW6	8231.....10
3205.....8	6646.....7	8241.....10
3207.....9	6647.....7	8264.....10
3208.....8	8212.....9	
3228.....8	8216.....5	

WORKWEAR

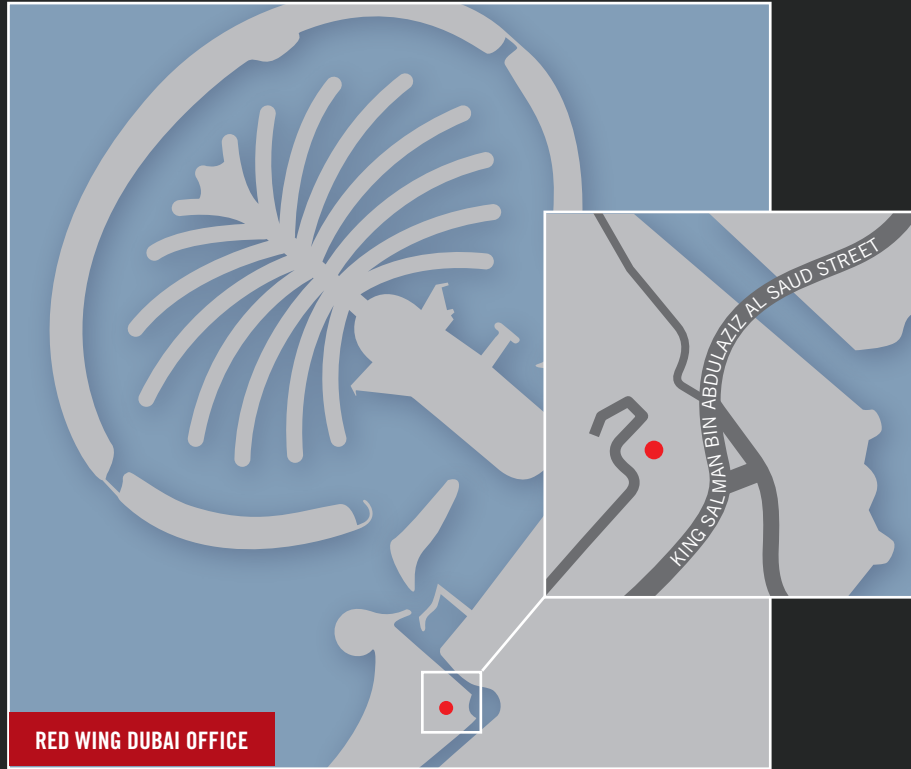
60140.....18	6291521
60640.....20	62965.....21
6111118	69007.....24
6111518	69018.....23
61140.....18	7111119
6181117	7231522

ACCESSORIES

69019 NEW28	69186.....28
69100.....29	95212.....28
69101.....29	95247.....27
69182.....28	95248.....27
69184.....28	95249.....27
69185.....28	95251.....27

Red = FR (Flame Resistant)

ORDERING Use the specifications chart to compare features. Order using the corresponding Product Number, 2 digit fabric Color Code, and your Chest size and Height.



Red Wing Global Solutions

Global oil and gas companies need suppliers they can trust to consistently meet their needs for Personal Protective Equipment (PPE) solutions. Red Wing has the Global Reach™ and worldwide expertise to supply and service you when and where you need it.

Whenever safety is critical, Red Wing has you covered.™



RED WING
AL HABTOOR BUSINESS TOWER
23RD FLOOR
PO BOX 283861
DUBAI
UNITED ARAB EMIRATES

REDWINGSAFETY.COM
UAE: +971 4 441 2382